

Office/Warehouse for Lease | 4955 Newport Street

Commerce City, Colorado 80022



all exterior photography, all pages | Copyright © 2018 by J. Barry Winter | All Rights Reserved

Office/Warehouse For Lease

PROPERTY SUMMARY

Asking Rate	\$11.00 + NNN
Building Size	10,228 sf
Office Space	1,110 sf - Updated
Yard	Approx. 5,000 sf fenced
Bathrooms	Three
Loading	1 drive in door - 12 ft
Loading	1 drive in door - 10 ft
Loading	1 drive in door - 10 ft and oversized
Power	3 phase 400 amp
Sprinkled	Yes - warehouse
Parking	6 on-property spaces
Zoning	I-2S

4955 Newport Street is now open for lease. It's building size of over 10,000 sf houses both office and warehouse space and is located in the Commerce City industrial area with nearby access to Interstate-70. It's three drive-in doors of varying sizes makes the loading area sufficient to handle swift warehousing needs. Having six on-site parking spaces with an ample supply of on-street parking as well as a large 5,000 square foot barbed-wire fenced-in yard serves as further prospect for operating a small to medium-sized business.



6795 E TENNESSEE AVE, STE 601, DENVER, CO 80224

Lev Cohen

720-880-2925 direct | 720-232-4118 cell

Sheldon Hayutin

720-880-2934 direct | 303-888-8597 cell

www.weststarcommercial.com

Information contained herein, while not guaranteed, is from sources believed reliable. Price, terms, and information subject to change

Copyright © 2020 Weststar Commercial. All Rights Reserved
4955NW-031220

4955 Newport Street | Great Opportunity
Commerce City, Colorado 80022



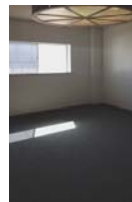
Office/Warehouse For Lease



all interior photography | Copyright © 2018 by Lev Cohen | All Rights Reserved



Copyright © 2018 by J. Barry Winter | All Rights Reserved



INDUSTRIAL HIGHLIGHTS

- Access to nearby I-70 ◀
- Large warehouse/office mix ◀
- Three drive in doors for swift loading ◀
- Within industrial area of Commerce City ◀
- 5,000 square feet of fenced in yard ◀

Call for more information

Lev Cohen

720-880-2925 direct | 720-232-4118 cell
lev@weststarcommercial.com

Sheldon Hayutin

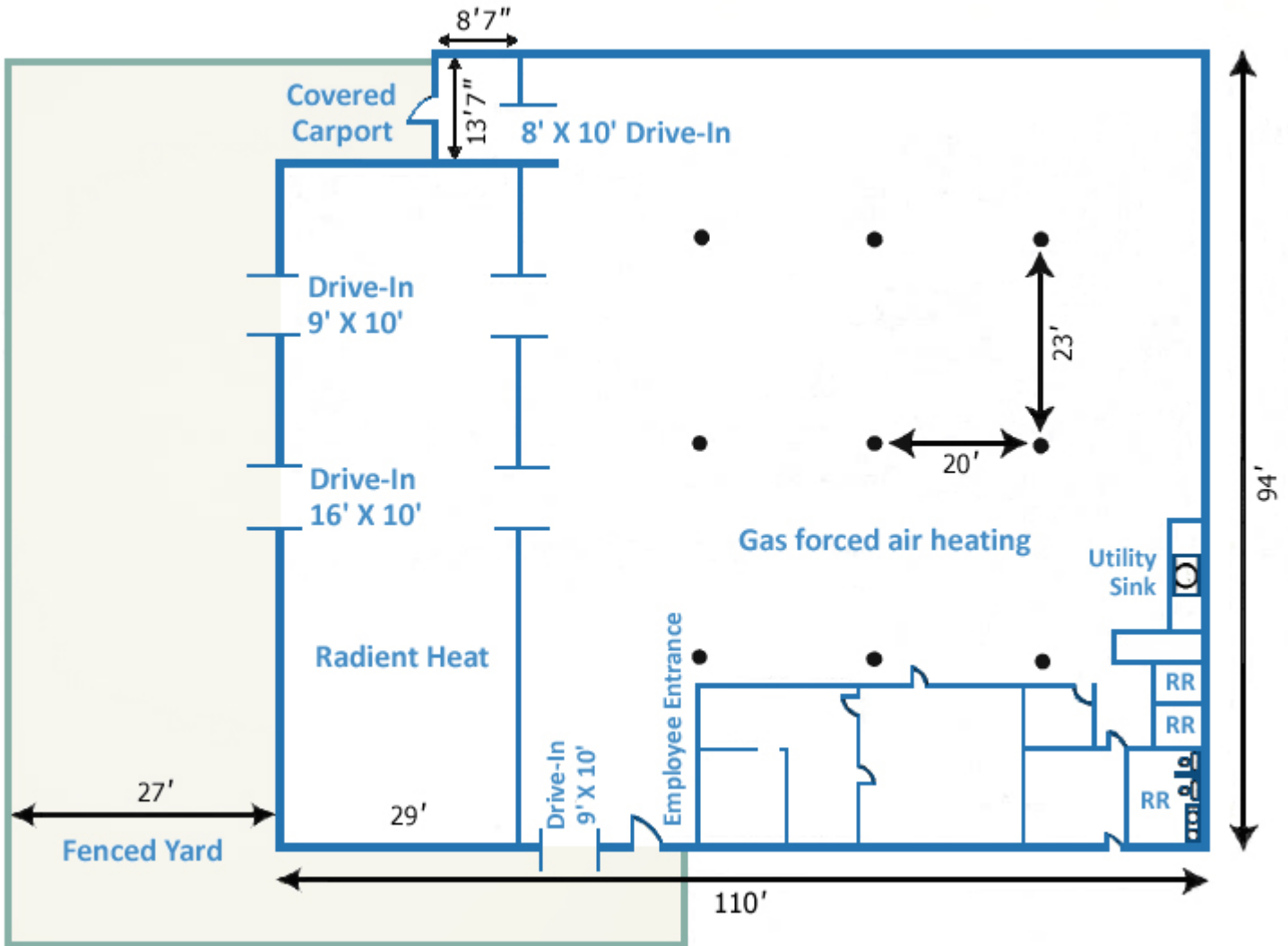
720-880-2934 direct | 303-888-8597 cell
sheldon@weststarcommercial.com

weststar

Copyright © 2020 Weststar Commercial
4955NW.031220

Office/Warehouse for Lease | 4955 Newport Street

Commerce City, Colorado 80022



Lev Cohen

720-880-2925 direct | 720-232-4118 cell
lev@weststarcommercial.com

Sheldon Hayutin

720-880-2934 direct | 303-888-8597 cell
sheldon@weststarcommercial.com

weststar

Copyright © 2020 Weststar Commercial
4955NW.031220