

# Two 1,125 SF Office Spaces Available | 3768 Norwood Drive, Littleton, Colorado 80125

Two spaces already leased this month Jan 2022! **Two remaining spaces available NOW and in April (or sooner)**



ALL PHOTOGRAPHY BOTH SIDES | COPYRIGHT © 2022 J. BARRY WINTER | ALL RIGHTS RESERVED

**weststar**

6795 E TENNESSEE AVE, STE 601, DENVER, CO 80224

720-941-9200 Main | 720-941-9202 Fax

**Lev Cohen**

720-880-2925 direct | 720-232-4118 cell

**Sheldon Hayutin**

720-880-2934 direct | 303-888-8597 cell

[www.weststarcommercial.com](http://www.weststarcommercial.com)

## 3768 Norwood Drive, Available Office Spaces in Littleton, Colorado

Two first floor office spaces have swiftly been leased this month in January 2022 within this industrialized area of Littleton, Colorado located near Santa Fe Drive and C-470. There remains two second story spaces of 1,125 square feet apiece where one is now available for immediate lease, the other one available in April of this year or sooner. They are built in such a way that should you require more space, two adjoining suites could become one for your specialized needs. Please call for more information for this special opportunity.

*Information contained herein was obtained from sources deemed reliable; however Weststar Commercial makes no guarantees, warranties or representations as to the completeness or accuracy thereof. Price, terms and information subject to change.*

Copyright © 2022 Weststar Commercial | All Rights Reserved | NRWD-010822

# Two 1,125 SF Office Spaces Available | 3768 Norwood Drive, Littleton, Colorado 80125

Two spaces already leased this month Jan 2022! **Two remaining spaces available NOW and in April (or sooner)**

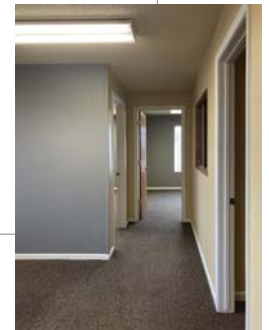
<h1>200</h1> <hr/> <p><b>AVAILABLE NOW</b></p> <p><b>1,125 SF</b></p>	<h1>201</h1> <hr/> <p><b>AVAILABLE APRIL 22 or SOONER</b></p> <p><b>1,125 SF</b></p>
<p><b>LEASED January 2022!</b></p> <p><b>1,125 SF</b></p> <h1>100</h1>	<p><b>LEASED January 2022!</b></p> <p><b>1,125 SF</b></p> <h1>101</h1>

## OFFICE SPACE OVERVIEW

Spaces for Lease	Unit 100   Leased Jan 2022 Unit 101   Leased Jan 2022 Unit 200 / 2nd Floor <b>Available NOW</b> Unit 201 / 2nd Floor <b>Available April 2022 or sooner</b>
SF Available	1,125 SF each available space
Asking Rental Rate	\$14 psf Modified Gross

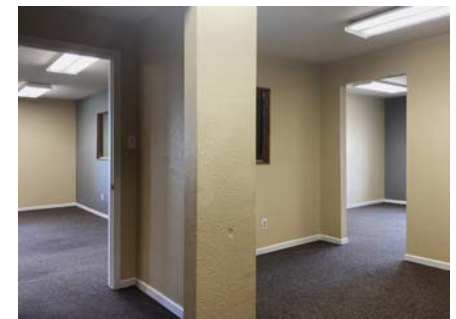
## LEASE INFORMATION

Spaces for Lease near Santa Fe and C-470. Tenants will have private access to their space with locked common area. Modified Gross rate includes: Taxes, Insurance, CAM, maintenance of HVAC and water.



## PROPERTY HIGHLIGHTS

- ▶ **1,125 SF - 2,250 SF Available for Lease**
- ▶ Multiple private office spaces and storage
- ▶ Spaces can be made ready to go
- ▶ Each office comes with private bathroom
- ▶ Spaces come with kitchen sink
- ▶ Private Access to each space
- ▶ Locked common area



ALL PHOTOGRAPHY | COPYRIGHT © 2022 J. BARRY WINTER | ALL RIGHTS RESERVED

*Please call for more information*

**Lev Cohen**  
720-880-2925 direct | 720-232-4118 cell  
**Sheldon Hayutin**  
720-880-2934 direct | 303-888-8597 cell

**weststar**  
Copyright © 2022 Weststar Commercial  
NRWD-010822