

Four 1,125 SF Office Spaces Available | 3768 Norwood Drive, Littleton, Colorado 80125

Four large spaces have just opened up for lease! If you need more room, two adjacent suites can be combined!



ALL PHOTOGRAPHY BOTH SIDES | COPYRIGHT © 2022 J. BARRY WINTER | ALL RIGHTS RESERVED

weststar

6795 E TENNESSEE AVE, STE 601, DENVER, CO 80224

720-941-9200 Main | 720-941-9202 Fax

Lev Cohen

720-880-2925 direct | 720-232-4118 cell

Sheldon Hayutin

720-880-2934 direct | 303-888-8597 cell

www.weststarcommercial.com



3768 Norwood Drive, Available Office Spaces in Littleton, Colorado

Two first floor office spaces and two second floor office spaces, 1,125 square feet apiece are now available for lease within this industrialized area of Littleton, Colorado located near Santa Fe Drive and C-470. Each respective level was built in such a way that should you require more space, two adjoining suites could become one for your specialized needs. Please call for more information for this special opportunity.

Information contained herein was obtained from sources deemed reliable; however Weststar Commercial makes no guarantees, warranties or representations as to the completeness or accuracy thereof. Price, terms and information subject to change.

Copyright © 2023 Weststar Commercial | All Rights Reserved | NRWD-020123

Four 1,125 SF Office Spaces Available | 3768 Norwood Drive, Littleton, Colorado 80125

Four large spaces have just opened up for lease! If you need more room, two adjacent suites can be combined!

200

**AVAILABLE
for Lease**

1,125 SF

201

**AVAILABLE
for Lease**

1,125 SF

**AVAILABLE
for Lease**

1,125 SF

100

**AVAILABLE
for Lease**

1,125 SF

101

OFFICE SPACE OVERVIEW

Spaces for Lease	Unit 100	now available
	Unit 101	now available
	Unit 200	now available
	Unit 201	now available
Space Available	1,125 sf	each unit
Asking Rental Rate	\$14 psf Modified Gross	

LEASE INFORMATION

Spaces for Lease near Santa Fe and C-470. Tenants will have private access to their space with locked common area. Modified Gross rate includes: Taxes, Insurance, CAM, maintenance of HVAC and water.

PROPERTY HIGHLIGHTS

- ▶ **1,125 SF - 2,250 SF Available for Lease**
- ▶ Multiple private office spaces and storage
- ▶ Spaces can be made ready to go
- ▶ Each office comes with private bathroom
- ▶ Spaces come with kitchen sink
- ▶ Private Access to each space
- ▶ Locked common area

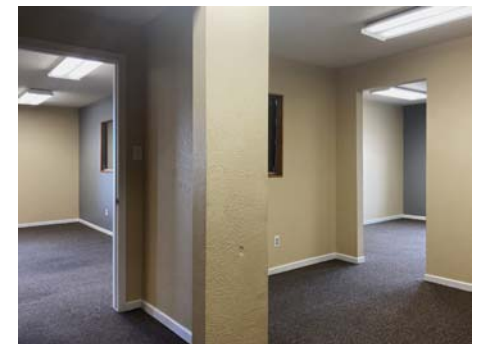
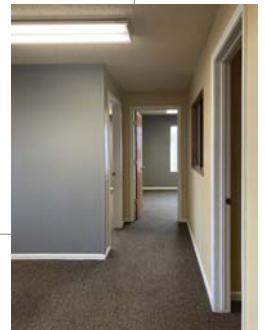
Please call for more information

Lev Cohen

720-880-2925 direct | 720-232-4118 cell

Sheldon Hayutin

720-880-2934 direct | 303-888-8597 cell



ALL PHOTOGRAPHY | COPYRIGHT © 2022 J. BARRY WINTER | ALL RIGHTS RESERVED

weststar

Copyright © 2023 Weststar Commercial
NRWD - 020123