

Medical/General Office Space Available for Lease | Castleton Building

4700 Castleton Way, Castle Rock, Colorado 80109

Asking: \$16 - \$18 psf plus NNN



all photography all sides | Copyright © 2024 J. Barry Winter | All Rights Reserved



6795 E TENNESSEE AVE, STE 601, DENVER, CO 80224
720-941-9200 Main | 720-941-9202 Fax

Lev Cohen
720-880-2925 direct | 720-232-4118 cell
lev@weststarcommercial.com

Tim Hakes
720-880-2923 direct | 720-352-9457 cell
tim@weststarcommercial.com

www.weststarcommercial.com

3,900 sf – 11,269 sf Space Available for Lease

This remarkably huge second story space in an open floor plan format with tall cathedral ceilings gives way for the greatest of possibilities for any business wishing to expand their horizons. With a dedicated elevator, incredible natural light and views through huge windows, plenty of office and storage space, a large kitchen, outdoor patio, high visibility from I-25, the familiar Outlets of Castle Rock only minutes away, as well as 5-10 minutes from AdventHealth Castle Rock, and ample on-site parking is worth taking the time to give us a call for more information.

AREA OVERVIEW

Average Daily Traffic Counts (2022)

I-25 at Meadows Pkwy NW	99,063 VPD
I-25 at Santa Fe Drive S	38,500 VPD

Area Demographics	1-Mile	3-Miles	5-Miles
2023 Population	3,772	49,833	88,327
Average HH Income	\$120,018	\$137,610	\$144,710

06/21/2024 Sources: demographics, CoStar Realty Information, Inc | traffic, TrafficMetrix

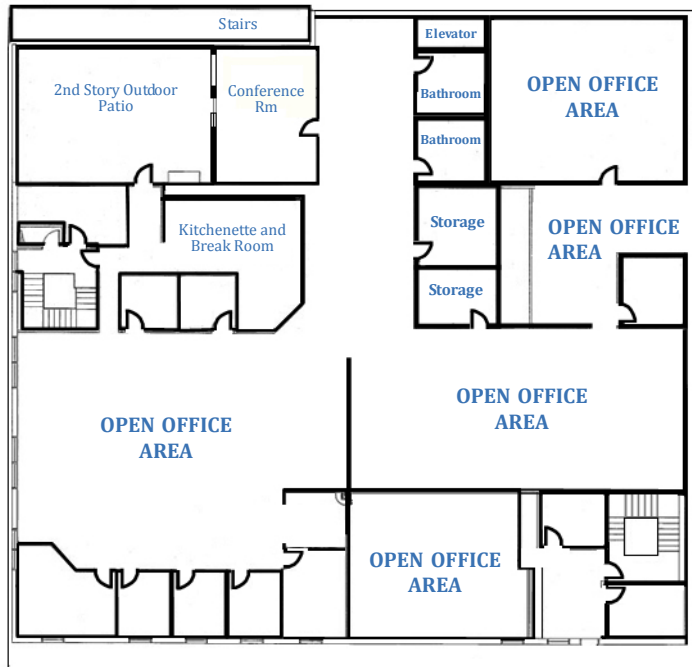
Information contained herein, while not guaranteed, is from sources believed reliable. Price, terms, and information subject to change.

Copyright © 2024 Weststar Commercial. All Rights Reserved

CSTLE - 062424

Medical/General Office Space Available for Lease | Castleton Building

4700 Castleton Way, Castle Rock, Colorado 80109



Second Story Floor Plan

3,900sf - 11,269sf Available Space for Lease Well worth seeing in person...



6795 E TENNESSEE AVE, STE 601, DENVER, CO 80224

720-941-9200 Main | 720-941-9202 Fax

Lev Cohen

720-880-2925 direct | 720-232-4118 cell
lev@weststarcommercial.com

Tim Hakes

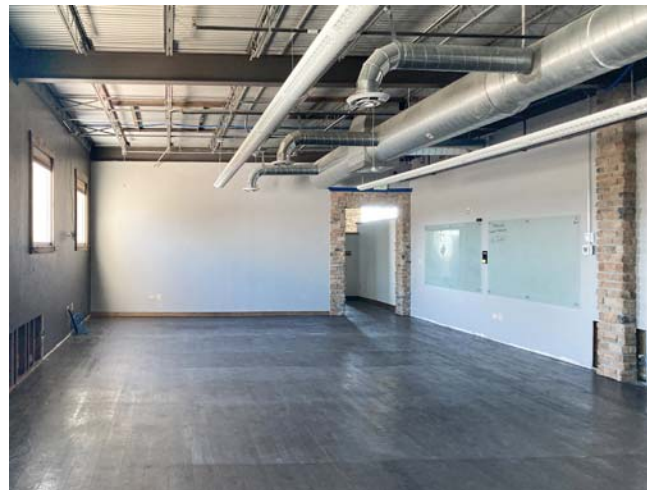
720-880-2923 direct | 720-352-9457 cell
tim@weststarcommercial.com

www.weststarcommercial.com



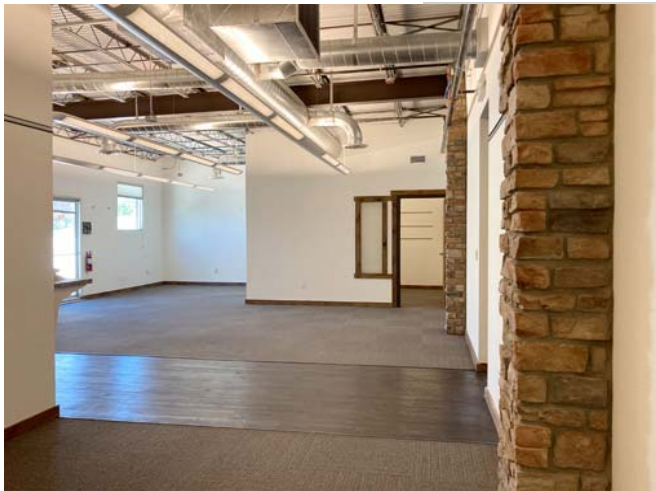
Medical/General Office Space Available for Lease | Castleton Building

4700 Castleton Way, Castle Rock, Colorado 80109



PROPERTY OVERVIEW

- 3,900sf – 11,269sf of available medical/office space ◀
- Asking \$16.00 - \$18.00 psf plus NNN ◀
- Tall Cathedral ceilings and open floor plan format ◀
- Huge windows for natural light and views ◀
- Dedicated elevator for easier access ◀
- Kitchen with second floor outdoor patio ◀
- Minutes away from the Outlets of Castle Rock ◀
- 5-10 minutes away from AdventHealth hospital ◀
- Ample on-site parking ◀



Lev Cohen

720-880-2925 direct | 720-232-4118 cell
lev@weststarcommercial.com

Tim Hakes

720-880-2923 direct | 720-352-9457 cell
tim@weststarcommercial.com

all photography all sides | Copyright © 2024 J. Barry Winter | All Rights Reserved

Medical/General Office Space Available for Lease | Castleton Building

4700 Castleton Way, Castle Rock, Colorado 80109

*Outlets at
Castle Rock*

Lev Cohen

720-880-2925 direct | 720-232-4118 cell
lev@weststarcommercial.com

Tim Hakes

720-880-2923 direct | 720-352-9457 cell
tim@weststarcommercial.com

The Castleton Building is centrally located and well worth your time to explore possibilities. Please don't hesitate to give us a call for more information.

**CASTLETON
BUILDING** ★

**AdventHealth at
Castle Rock**



Meadows Pkwy

Santa Fe Dr

Santa Fe Dr

Santa Fe Dr

Castleton Ct

Trail Boss Dr

Woodlands Blvd

Prairie Hawk Dr

Red Hawk Dr

