

# Rare 1,875 sf Warehouse Space for Lease | 3768 Norwood Drive

Littleton, Colorado 80125

**Asking Rate :**

**\$11.00 psf + NNN**

***A Rare Opportunity  
Automotive is allowed on this property!***



ALL PHOTOGRAPHY BOTH SIDES | COPYRIGHT © 2024 J. BARRY WINTER | ALL RIGHTS RESERVED

**weststar**

6795 E TENNESSEE AVE, STE 601, DENVER, CO 80224

720-941-9200 Main | 720-941-9202 Fax

**Lev Cohen**

720-880-2925 direct | 720-232-4118 cell

**Sheldon Hayutin**

720-880-2934 direct | 303-888-8597 cell

[www.weststarcommercial.com](http://www.weststarcommercial.com)

## 3768 Norwood Drive, Industrial Warehouse Space Available in Littleton, Colorado

This property located in Littleton, Colorado located adjacent to South Santa Fe Drive near the C-470 access has recently opened up a large **1,875 square foot warehouse space that allows automotive uses on the property which is rare**. This high-ceiling space offers an oversized drive in door, as well as a couple of small offices with respective bathrooms. Please feel free to contact us for further detailed information.

Information contained herein was obtained from sources deemed reliable; however Weststar Commercial makes no guarantees, warranties or representations as to the completeness or accuracy thereof. Price, terms and information subject to change.

Copyright © 2025 Weststar Commercial | All Rights Reserved | 3768NRWD - 021025

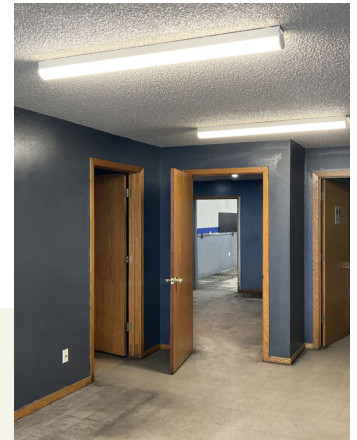
# Rare 1,875 sf Warehouse Space for Lease | 3768 Norwood Drive

Littleton, Colorado 80125



Copyright © 2025 Weststar Commercial  
3768NRWD - 021025

NORWOOD DRIVE



<b>UNIT 101</b> 1,125 sf For Lease	<b>UNIT 100</b> Leased
<b>UNIT 201</b> Leased	<b>UNIT 200</b> Leased
<b>UNIT F</b> 1,875 sf For Lease	
<b>UNIT E</b> KuKu Campers USA	
<b>UNIT ABCD</b> recently leased	
<b>SAVE-A-TREE</b>	

Allotted Onsite Parking Spaces

S SANTA FE DRIVE



ALL PHOTOGRAPHY BOTH SIDES | COPYRIGHT © 2024 J. BARRY WINTER | ALL RIGHTS RESERVED

## PROPERTY HIGHLIGHTS

- ▶ 1,875 SF Space for Lease
- ▶ Automotive is allowed
- ▶ Adjacent to S Santa Fe Dr
- ▶ Easy access to C-470 nearby
- ▶ Includes two small offices
- ▶ One bathroom
- ▶ One drive in door
- ▶ Allotted onsite parking

disclaimer: not drawn to scale; only a visual approximation of space sizes

**Lev Cohen**

720-880-2925 direct | 720-232-4118 cell  
lev@weststarcommercial.com

**Sheldon Hayutin**

720-880-2934 direct | 303-888-8597 cell